

Epson FastFoto Photo Scanner



Introduction:

The FastFoto is a very convenient photo scanner. Capable of scanning photo prints in as fast as one second, it's equipped to scan a stack of photos at a time. The software gives you a scan of the original image, one that has color correction, and if it detects any writing on the back, you get a scan of the back as well.

General information

Parts of the machine	1
Setting up the scanner	1

Operating the scanner

Scanning a stack of photos	2
----------------------------	---

Changing Settings

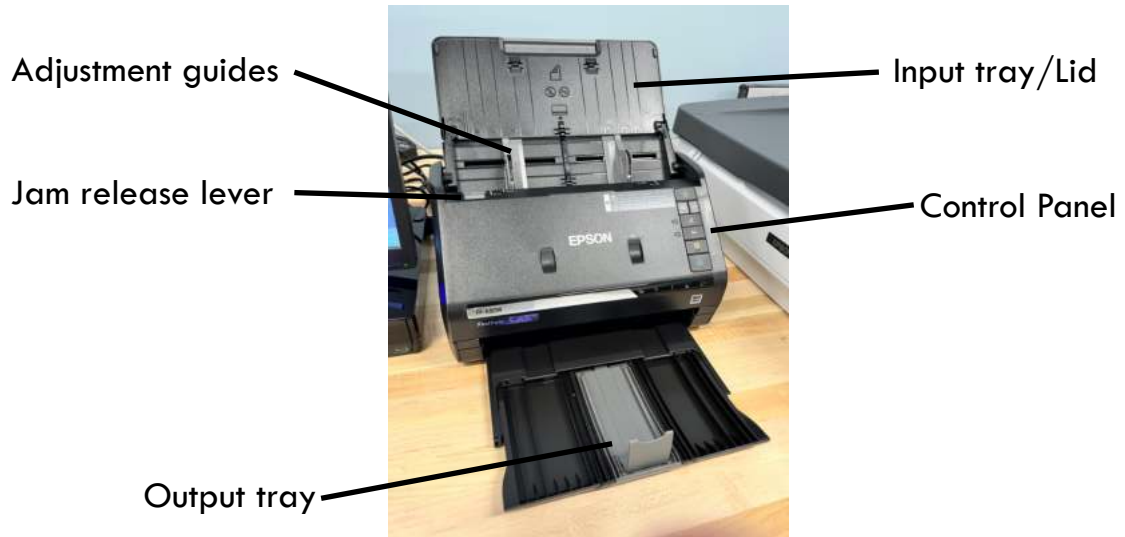
Altering enhancements	5
Changing the scanning settings	5
Changing the save location	6

Maintenance

Releasing a jam	7
Cleaning the scanner	8

General information

Parts of the machine



Setting up the scanner

1. If scanner is closed, lift the lid and pull out the bottom tray.



2. Turn on the scanner.



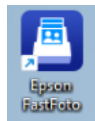
Operating the scanner

Scanning a stack of photos

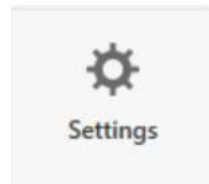
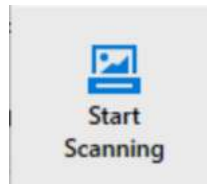
1. Place a stack of photos face up into the top portion of the scanner. Slide the gray adjustment arms to where they are against each side of the stack and they are centered in the tray. Ensure the top of the images are facing down in the scanner tray. These can be of different sizes, as long as they are the same width when set inside the tray. Photos of different sizes may get pulled in sideways and jam up the printer or damage your images.



2. Double click on the Epson FastFoto icon on the desktop to open the software.



3. Here you will either click Start Scanning to begin scanning your photos, or you can press Settings if you want to adjust anything prior to scanning. If you do, see the section on Changing Settings.



4. A window will open on the computer asking you to describe your photos. Here you can list a year, month or season, and any further descriptions you wish so that when they are scanned they are organized neatly. This step is optional, but can make organizing easier if you're scanning batches of photos from the same time/event. You can include as little or as much information in these boxes as you want.

- a. This alters your filename from the default of FastFoto_0001 to something like 1987_Summer_Family Reunion_0001.

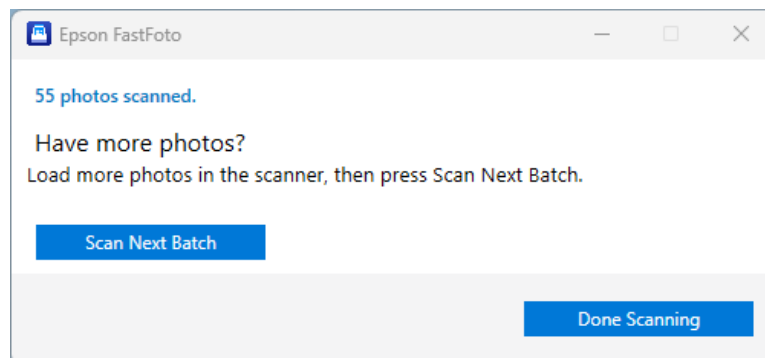
5. Press Start Scanning.

Start Scanning

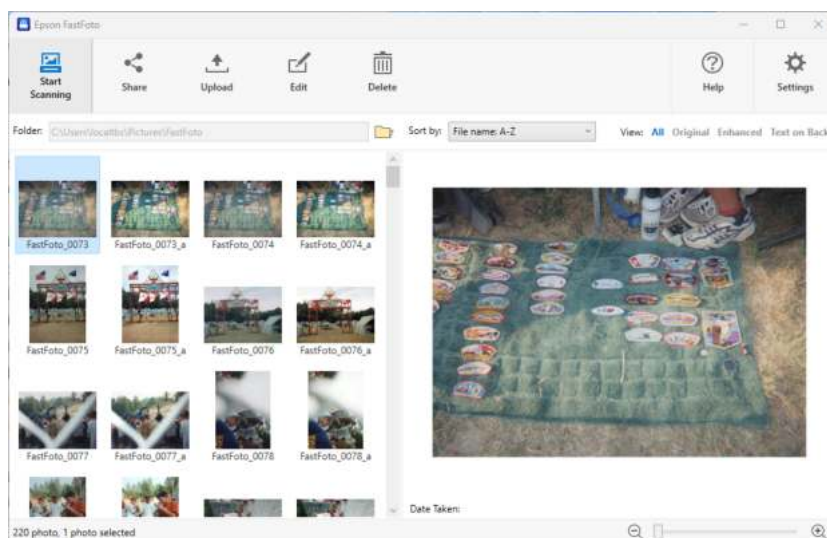
6. The scanner will begin pulling all the photos through the scanner one at a time until the process is done.



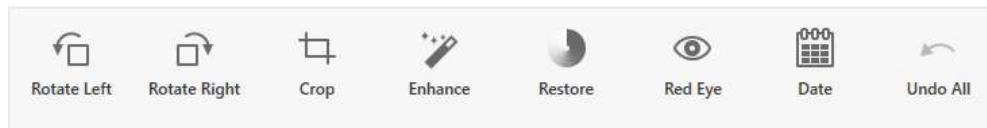
7. You're now given a prompt that if you have more photos from the same batch, you can put those in the scanner and press Scan Next Batch. If you're done with this batch you can click Done Scanning. This will continue to use the same description you entered in step 5.



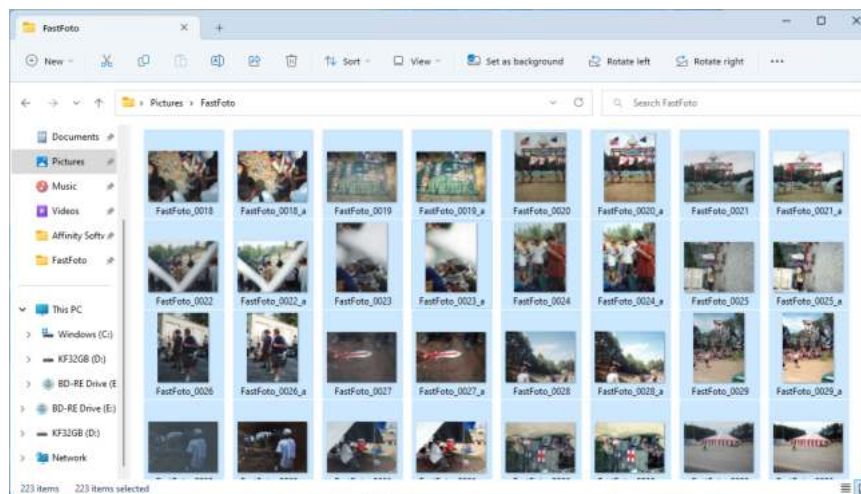
8. Once you're done scanning you'll be taken to the FastFoto program to look at the scanned images.



9. Each photo will come back with up to 3 images. The original scanned image, a color corrected version, and the back if any text was written on the back of the photo.
10. Clicking the edit button on the top bar will give you a variety of simple editing tools like rotate, crop, and enhance.



11. When you're happy with the images you've scanned, there is a FastFoto folder on the desktop. Any scanned images are placed here.



12. Plug in a flash drive or SD card and open the FastFoto folder.
13. Press Ctrl+A to select all the folders and images in the folder. Then click and drag them over to your storage device.

NOTE: The computer resets when it restarts. Any scanned images on the computer not transferred when you sign out will be lost and will need to be re-scanned again.

Changing Settings

Altering enhancements

The scanner will give you the original scan along with an auto-enhanced version. You can modify how those enhancements are applied in the settings.

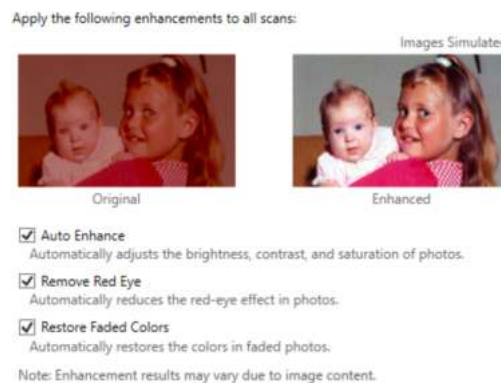
1. Click the gear in the top right of the screen for Settings.



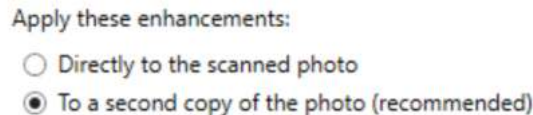
2. Find the Enhancements tab on the left sidebar.



3. Here you can toggle the auto enhance, red eye remover, and color restoration on or off for the scanned images.



4. You also can choose whether to apply these enhancements directly to the initial scan or to keep the second version of the image as the one with the enhancements.



- a. Note it's recommended you save two copies so you have the original and the enhanced in case you wish to change your mind later on which you prefer.

Changing the scanning settings

By default the printer will scan at 300 dpi which is great if you want a scan the same size as the source image. If you would like to scan your images to a higher quality you can do so in the settings menu.

1. Click the gear in the top right of the screen for Settings.



2. Find the Scan Settings tab on the left sidebar.



3. Here you can modify the settings to either 600 or 1200 dpi.

Scan my photos at this resolution:

- ☒ 300 dpi - fastest scanning
Great for reprints, slideshows, and sharing.
At 300 dpi, each photo takes about 1 second to scan.
- ☐ 600 dpi - archival scanning
Great for archiving, enlarging, and cropping.
At 600 dpi, each photo takes about 3 seconds to scan.
- ☐ 1200 dpi (interpolated) - highest resolution
Extra resolution for enlarging and cropping.
At 1200 dpi, each photo takes about 10 seconds to scan.

4. You can change the file format from JPG to TIFF if you wish to have more archival quality.

File format:

- ☒ JPEG
- ☐ TIFF

5. There are also three spots at the top of the screen to choose the style of image you have be it a standard square or rectangular photo, a Polaroid style instant photo, or a longer panoramic image up to three feet in length.

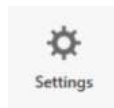
Photo type:



Changing the save location

Warning: This option has on occasion failed. It saves time by not requiring you to transfer images at the end, but you will want to ensure after each batch that the images did scan properly before moving onto the next batch.

1. Click the gear in the top right of the screen for Settings.



2. Find the Organization tab on the left sidebar.



3. Here you can change the location your images save to. By default it's the FastFoto folder in the Pictures folder of the computer, but you can set it to be a flash drive or SD card.



4. You can also turn off the option to ask for you to describe your photos between each batch of images if you would like to not be reminded each time.



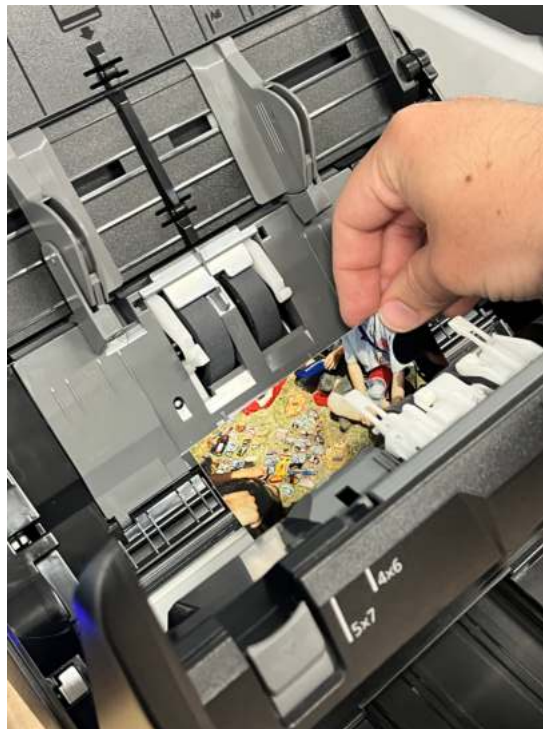
Maintenance

Releasing a jam

1. In the event that a photo jams inside the scanner, pull the gray button on the left side of the input tray.

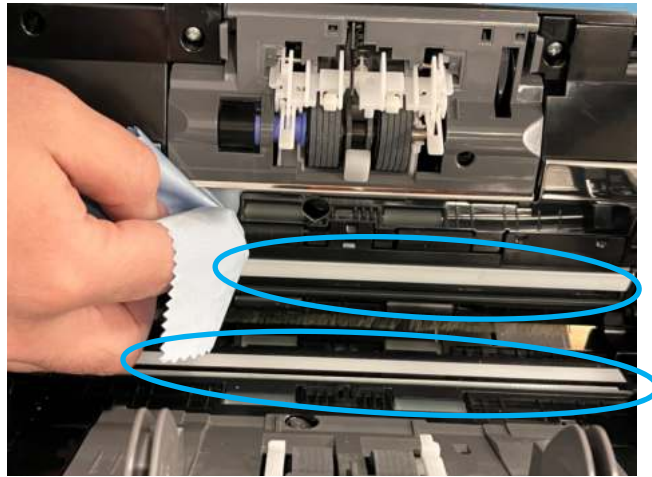


2. This opens the scanner and any jammed images can be removed.

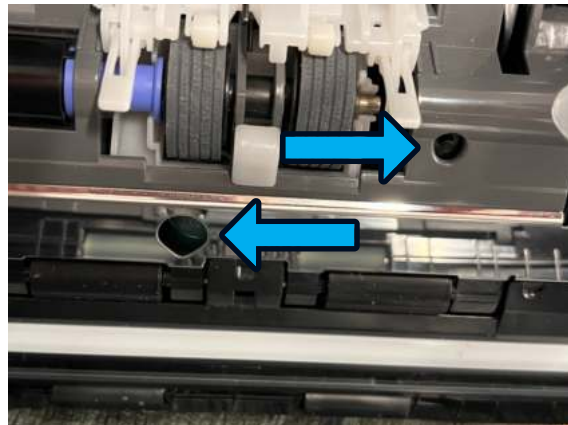
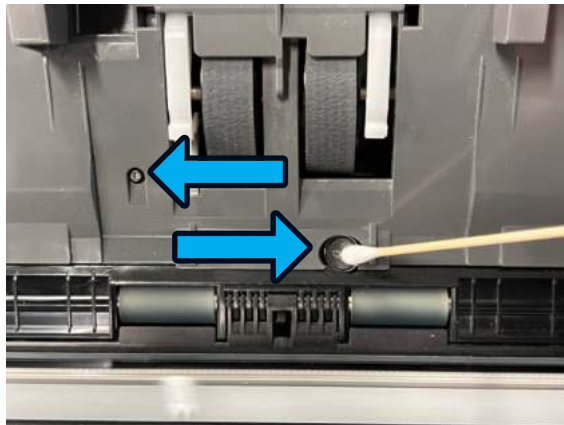


Cleaning the scanner

1. Open the front cover by using the jam release lever.
2. Locate the two clear scanning strips on either side and using a dry microfiber cloth, gently rub off any residue on the strips.



3. Using a cotton swab, locate the four sensors and gently remove any dust.



4. Close the front cover.